

autochlorTM
SALT WATER CHLORINATION

www.autochlor.eu



APPLICATIONS:

- ✓ Spa
- ✓ Swimming Pool
- ✓ Aqua Park
- ✓ Lagoon
- ✓ Water feature
- ✓ Fountain
- ✓ Aquariums with seawater animals
- ✓ Cooling water for power stations
- ✓ Seawater for cooling towers
- ✓ Seawater for a ship's ballast
- ✓ Pre-treatment of seawater before desalination

BENEFITS:

- ✓ Eliminate the dependence on commercial chlorine suppliers
- ✓ Avoid the risk inherent in the transport and handling of chlorine products
- ✓ Lower the operating costs
- ✓ Achieve a complete automatic process which requires minimal operator attendance

“salt is a natural antiseptic which means we create hygienic water naturally”



“Choosing Autochlor™ reduces power consumption reducing your carbon footprint”



PROUDLY
MADE IN AUSTRALIA

Autochlor™ = Saltwater + Electricity

Autochlor™ is revolutionary

International winner in the 2009 of the GOLD GAIA AWARD, in Dubai, 2009 International Stevie Award, Gold, in New York and 2014 Bronze Stevie Award, Asia-Pacific for its revolutionary features, AUTOCHLOR(TM) is an on-site, in-line chlorine generation plant capable of producing chlorine in salt / saline water.

Autochlor™ is cost effective

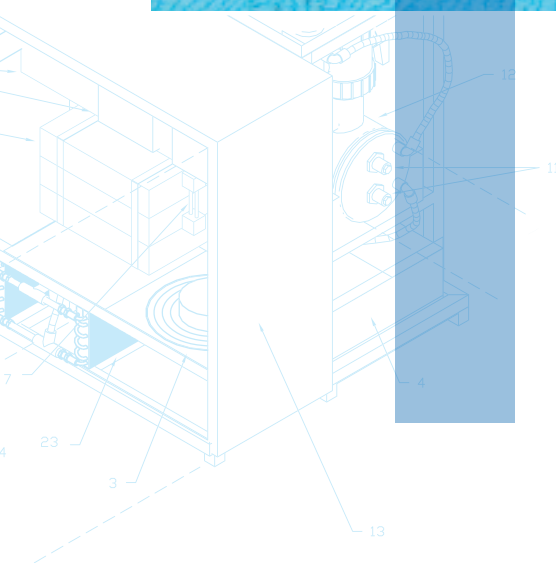
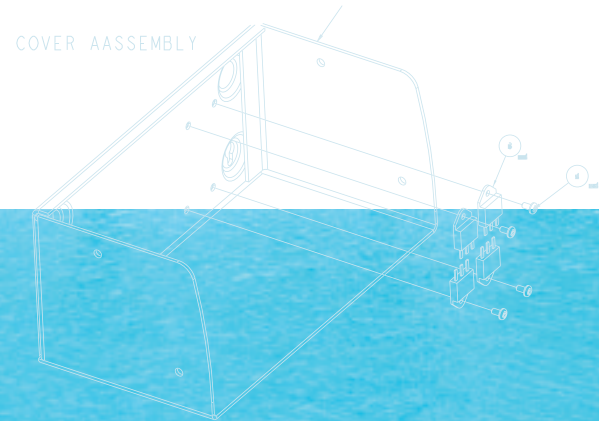
Powered by Switch Mode Power supply Autochlor™ delivers 60% savings on electrical power consumption and automatically adjusts to water of any salinity.

Autochlor™ is versatile

Various designs developed to suit many applications. Autochlor™ can be retrofitted to any existing installation. Autochlor™ comes skid-mounted pre-assembled for easy installation, or as a modular unit, allowing the system to be installed into confined places.

Autochlor™ is safe

Autochlor™ eliminates chemical contamination risk to the environment and operator exposure to dangerous fumes. Australian made and designed, Autochlor™ is robust, reliable and comes with a three-year warranty.

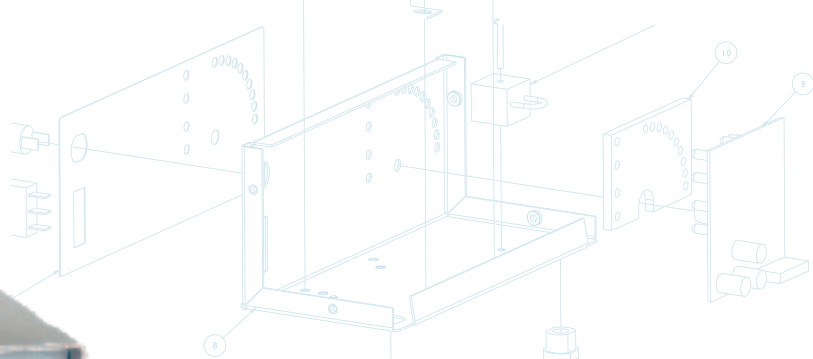


AC Series

Salt Water Electrolysers/Chlorine Generators

- Non-reverse Polarity
- Powered By Transformer Power Supply
- Salinity Range: 4,500–6,500 mg/L

Model	Chlorine Gas Equivalent	Input AC Power Consumption	Water Flow	Dimension (Packaged)	Weight Gross
	Grams/Hour	kW	Litres/minute	L x W x H (cm)	Kg
ACMINI	5	0,070	200–400	37 x 31 x 22	11
AC15	15	0,215	200–400	37 x 31 x 22	11
AC20	20	0,290	200–400	37 x 31 x 22	11
AC25	25	0,360	200–400	37 x 31 x 22	11
AC35	35	0,505	200–400	43 x 33 x 27	14
AC50HD	50 With Heavy Duty Grade Electrodes	0,720	200–400	43 x 33 x 27	16
AC100HD	100 With Heavy Duty Grade Electrodes	1,440	200–400	47 x 44 x 28	28



RP Series

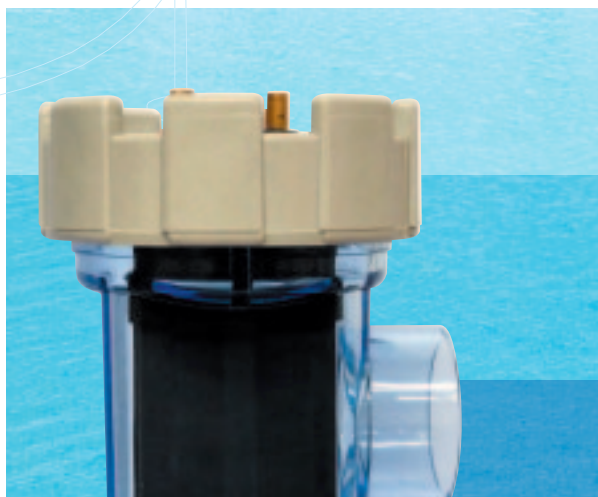
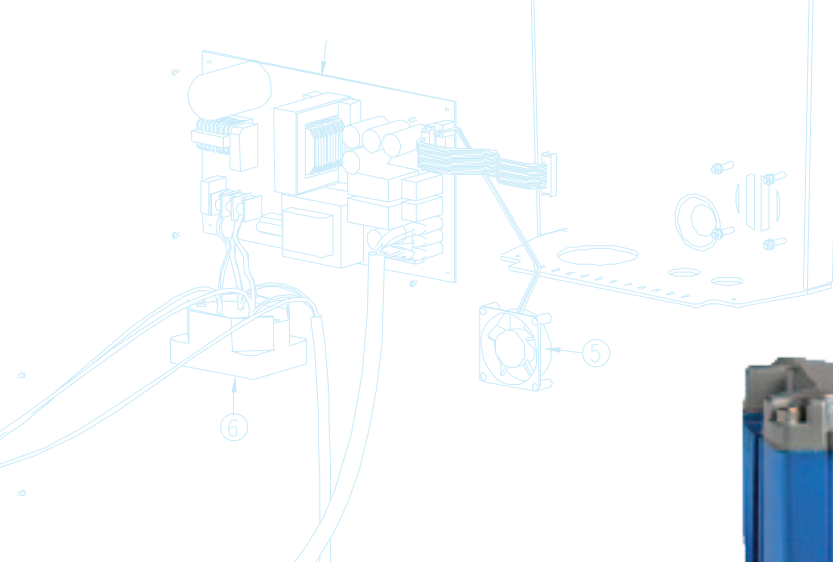
Salt Water Electrolysers/Chlorine Generators

- Reverse Polarity (Reduced Maintenance)
- Powered By Transformer Power Supply
- The Reversing Action De-scales The Build-up Of Calcium And Reduces Electrode Cleaning Maintenance By 95%
- Salinity Range: 4,500–6,500 mg/L

Model	Chlorine Gas Equivalent	Input AC Power Consumption	Water Flow	Dimension (Packaged)	Weight Gross
	Grams/Hour	kW	Litres/minute	L × W × H (cm)	Kg
RP7	7	0,100	200–400	39 × 19 × 30	5,5
RP15	15	0,215	200–400	37 × 31 × 22	11
RP20	20	0,290	200–400	37 × 31 × 22	11
RP25	25	0,360	200–400	37 × 31 × 22	11
RP36	36	0,290	200–400	37 × 31 × 22	11
RP50	50	0,720	200–400	43 × 33 × 27	16
RP64	64	0,505	200–400	43 × 33 × 27	16
RP92	92	0,720	200–400	43 × 33 × 27	16



autochlor[™]
SALT WATER CHLORINATION



PRO Series

Salt Water Electrolysers/Chlorine Generators

- Reverse Polarity (Reduced Maintenance)
- Powered By Transformer Power Supply
- The Reversing Action De-scales The Build-up Of Calcium And Reduces Electrode Cleaning Maintenance By 95%
- Salinity Range: 4,500–6,500 mg/l
- The Highest Water Resistance Rating On The Market – IP56

Model	Chlorine Gas Equivalent	Input AC Power Consumption	Water Flow	Dimension (Packaged)	Weight Gross
	Grams/Hour	kW	Litres/minute	L x W x H (cm)	Kg
PRO-ERP15	15	0,215	200–400	76 x 25 x 38	13
PRO-ERP20	20	0,290	200–400	76 x 25 x 38	13
PRO-ERP25	25	0,360	200–400	76 x 25 x 38	13



SMC Series

Salt Water Electrolysers/Chlorine Generators

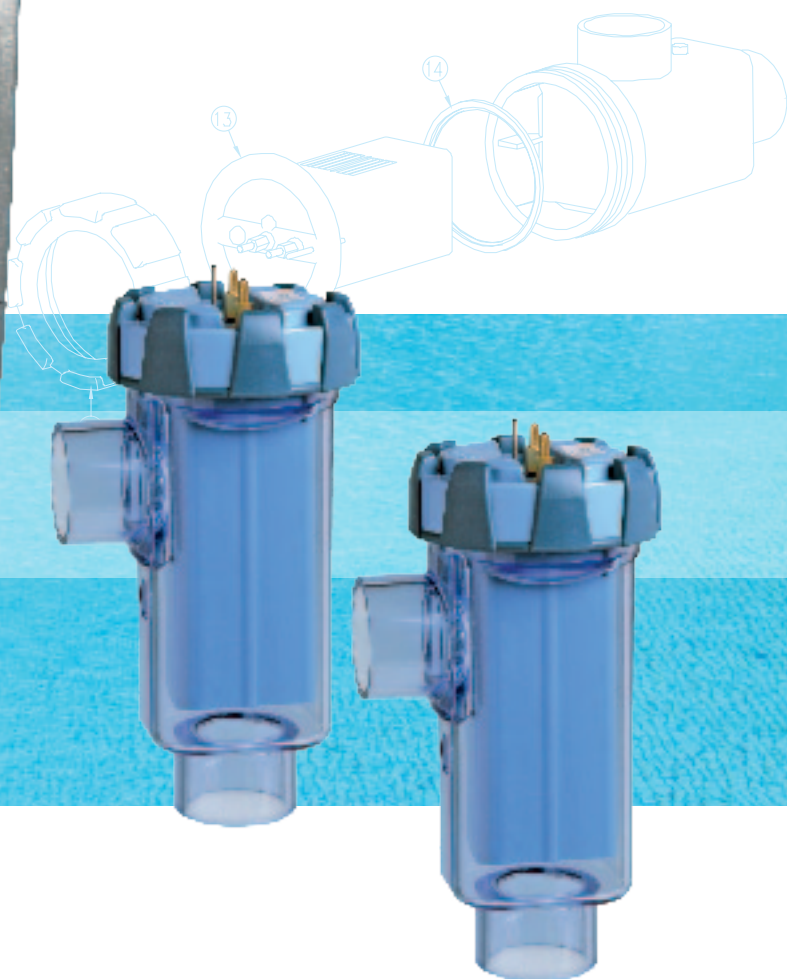
- Reverse Polarity (Reduced Maintenance)
- The Reversing Action De-scales The Build-up Of Calcium And Reduces Electrode Cleaning Maintenance By 95%
- Powered By Switch Mode Power Supply (SMPS)
- Considerably More Efficient Than Transformer Powered Electrolysers/Chlorine Generators
- Smaller And Lighter Means Easy Installation Into Tight Spaces
- Bipolar Electrode And Superior Coating Of Electrodes Extends Electrode Life
- Salinity Range: 4,000–35,000 mg/L

Model	Chlorine Gas Equivalent	Input AC Power Consumption*	Water Flow	Dimension (Packaged)	Weight Gross
	Grams/Hour	kW	Litres/minute	L x W x H (cm)	Kg
SMC20	20	0,250	200–400	48 x 35 x 17	4,5
SMC30	30	0,330	200–400	48 x 35 x 17	4,5

*at 5000mg/L TDS, 7.5 pH, 20 °C and specified flow rates
Data provided in table above to be used as a guide only



autochlor[™]
SALT WATER CHLORINATION



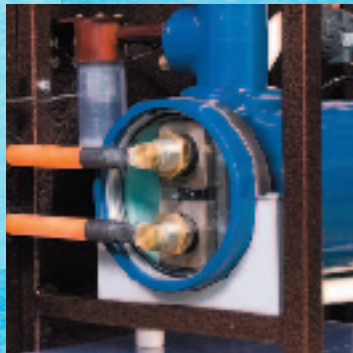
MineralChlor

Salt Water Electrolysers/Chlorine Generators

- Reverse Polarity (Reduced Maintenance)
- The Reversing Action De-scales The Build-up Of Calcium And Reduces Electrode Cleaning Maintenance By 95%
- Powered By Switch Mode Power Supply (SMPS)
- Considerably More Efficient Than Transformer Powered Electrolysers/Chlorine Generators
- Smaller And Lighter Means Easy Installation Into Tight Spaces
- Two Bipolar Electrodes And Superior Coating Of Electrodes Extends Electrode Life
- Salinity Range: 2,500 mg/L

Model	Chlorine Gas Equivalent	Input AC Power Consumption*	Water Flow	Dimension (Packaged)	Weight Gross
	Grams/Hour	kW	Litres/minute	L x W x H (cm)	Kg
SMC20-2500PPM	22	0,250	200-400	58 x 35 x 17	5

*at 5000mg/L TDS, 7.5 pH, 20 °C and specified flow rates
Data provided in table above to be used as a guide only



SR/SA Series

Salt Water Electrolysers/Chlorine Generators

- Non-Reverse Polarity
- Powered By Switch Mode Power Supply (SMPS)
- Considerably More Efficient Than Transformer Powered Electrolysers/Chlorine Generators
- Expected Electrode Life – 45,000 hours
- Build-in Acid Wash System
- Sealed, Internally Cooled Power Supply
- Skid Mounted Design (IP66)
- Modular Design Is Available On Request
- Salinity Range: 3,000–360,000 mg/L

Model	Chlorine Gas Equivalent*	Power Consumption**	Water Flow Rate				Dimension (Packaged)	Weight Gross
	g/h	kW	High Flow Model		Low Flow Model		L × W × H (cm)	Kg
			L/s	Pipe DN, mm	L/s	Pipe DN, mm		
SR-200	200	1,2	2,5–6,7	50	0,6–1	25	75 × 75 × 84	95
SR-300	300	1,8	2,5–6,7	50	0,6–1	25	75 × 75 × 84	105
SR-400	400	2,4	2,5–6,7	50	0,8–1,3	25	92 × 85 × 130	155
SR-500	500	3,0	2,5–6,7	50	0,8–1,3	25	92 × 85 × 130	170
SR-800	800	4,8	5–17	80	1,4–2	32	90 × 100 × 155	280
SR-1000	1000	6,0	5–17	80	1,4–2	32	90 × 100 × 155	310
SR-1250	1250	7,5	5–17	80	2–2,8	32	90 × 100 × 155	330
SR-1500	1500	9,0	5–17	80	2–2,8	32	90 × 100 × 155	360
SA-2000	2000	12,0	5–17	80	2,8–3,7	40	150 × 150 × 159	510
SA-2500	2500	15,0	5–17	80	2,8–3,7	40	150 × 150 × 159	550
SA-3000	3000	18,0	5–17	80	2,8–3,7	40	150 × 150 × 159	600

NB: Larger capacity models are available upon request. For full listing please visit www.autochlor.eu

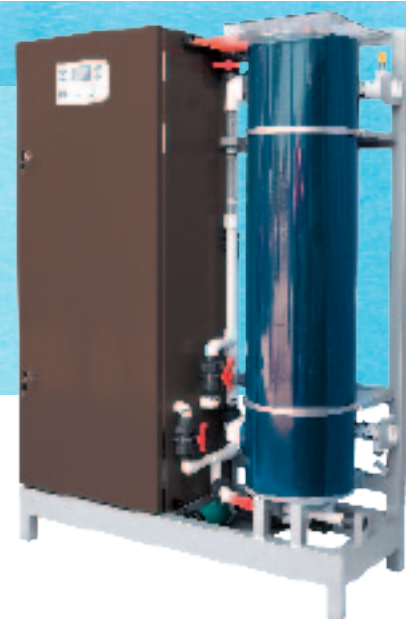
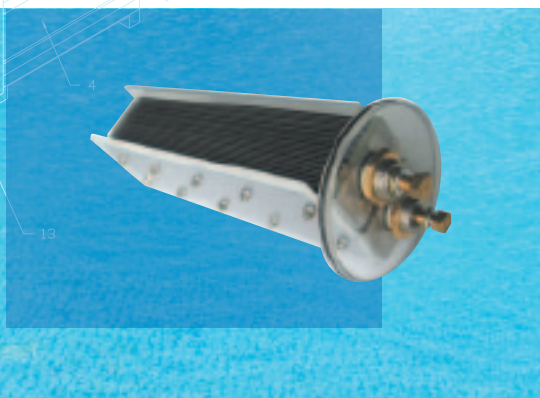
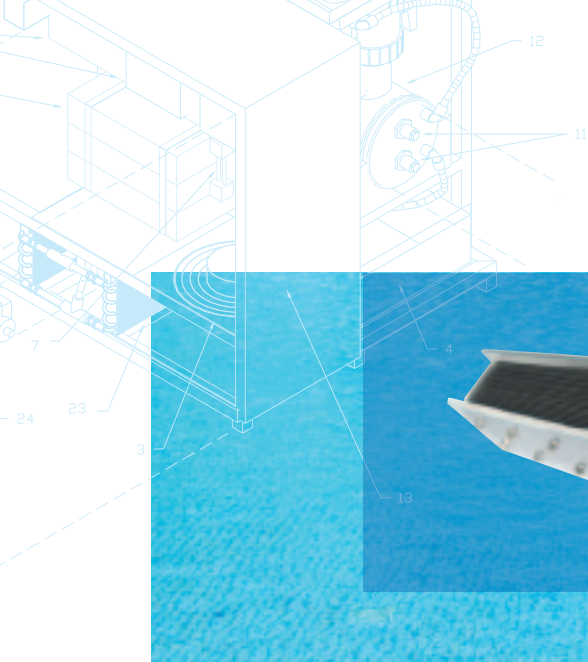
*at 5000 mg/L TDS. Please note that pH greater than 7,5 increases chlorine demand.

**at 25 °C

Normal operation pressure up to 275 kPa, up to 1000 kPa can be built upon request

High Flow Models supplied by default, Low Flow Models available upon request

Data provided in the table above to be used as a guide only



SRC/SAC Series Salt Water Electrolysers/Chlorine Generators

- Reverse Polarity (Reduced Maintenance)
- The Reversing Action De-Scales The Build-up Of Calcium And Reduces Electrode Cleaning Maintenance By 95%
- Powered By Switch Mode Power Supply (SMPS)
- Considerably More Efficient Than Transformer Powered Chlorine Generators
- Expected Electrode Life – 45,000 hours
- Build-in Acid Wash System
- Sealed, Internally Cooled Power Supply
- Skid Mounted Design (IP66)
- Modular Design Is Available On Request
- Salinity Range: 2,000–360,000 mg/L

Model	Chlorine Gas Equivalent*	Power Consumption**	Water Flow Rate				Dimension (Packaged)	Weight Gross
	g/h	kW	High Flow Model		Low Flow Model		L x W x H (cm)	Kg
			L/s	Pipe DN, mm	L/s	Pipe DN, mm		
SRC-100	100	0,58	2,5–6,7	50	0,5–0,8	20	41 x 90 x 60	50
SRC-150	150	0,87	2,5–6,7	50	0,5–0,8	20	41 x 90 x 70	55
SRC-200	200	1,16	2,5–6,7	50	0,6–1	25	75 x 75 x 84	110
SRC-300	300	1,74	2,5–6,7	50	0,6–1	25	75 x 75 x 84	120
SRC-400	400	2,32	2,5–6,7	50	0,8–1,3	25	92 x 85 x 130	175
SRC-500	500	2,90	2,5–6,7	50	0,8–1,3	25	92 x 85 x 130	190
SRC-625	625	3,63	2,5–6,7	50	0,8–1,3	25	92 x 85 x 130	212
SRC-800	800	4,64	5–17	80	1,4–2	32	90 x 100 x 155	300
SRC-1000	1000	5,80	5–17	80	1,4–2	32	90 x 100 x 155	330
SRC-1250	1250	7,25	5–17	80	2–2,8	32	90 x 100 x 155	350
SRC-1500	1500	8,70	5–17	80	2–2,8	32	90 x 100 x 155	380
SAC-2000	2000	11,60	5–17	80	2,8–3,7	40	150 x 150 x 159	530
SAC-2500	2500	14,50	5–17	80	2,8–3,7	40	150 x 150 x 159	570
SAC-3000	3000	17,40	5–17	80	2,8–3,7	40	150 x 150 x 159	620

NB: Larger capacity models are available upon request. For full listing please visit www.autochlor.eu

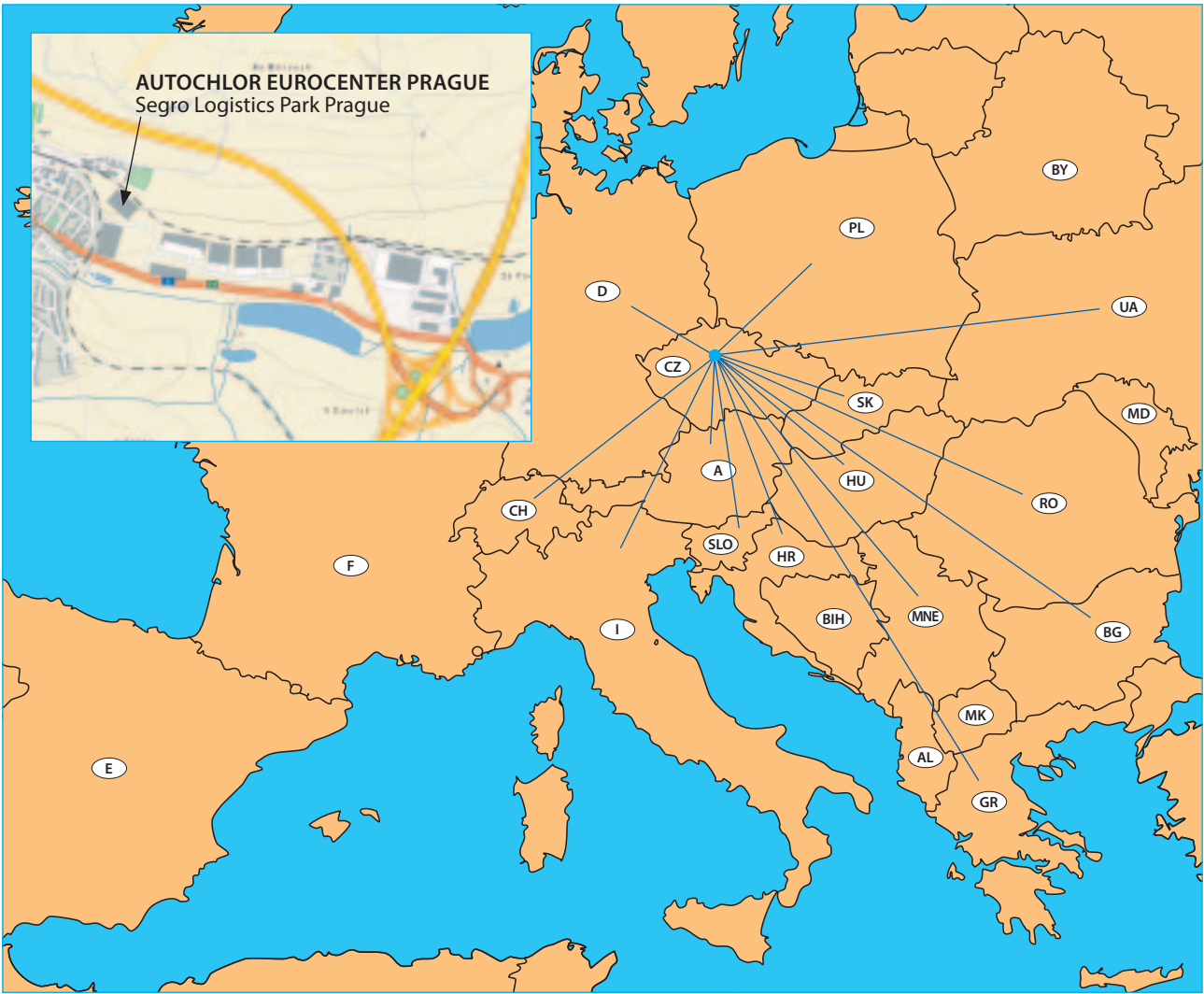
*at 5000 mg/L TDS. Please note that pH greater than 7,5 increases chlorine demand.

**at 25 °C

Normal operation pressure up to 275 kPa, up to 1000 kPa can be built upon request

High Flow Models supplied by default, Low Flow Models available upon request

Data provided in the table above to be used as a guide only



AIS Ltd. Brisbane QLD. Australia





THE EUROPEAN DISTRIBUTOR

TRYGON PACIFIC INTERNATIONAL

Masarykova 116, CZ-400 01 Ústí nad Labem

phone: + 420 475 221 695, fax: + 420 475 216 326, e-mail: info@autochlor.eu

AUTOCHLOR EUROCENTER PRAGUE

Segro Logistics Park Prague, Archeologická 1377, CZ-253 01 Hostivice